



MICROS II

A SMALL LUMINAIRE WITH A BIG IMPACT



FORETHOUGHT

MICROS II – a small luminaire featuring state-of-the-art lighting technology for ancillary areas in retail, the hotel and catering sector, hospitals and living areas. The downlight's different colour variants offer a huge amount of scope for creative design. Yet MICROS II also allows for one-to-one replacement of old small downlights, which still use halogen bulbs, for example.

MICROS II offers various colour combinations for front ring, deco reflector and surface mounted housing:



black /
black



aluminium /
black



white /
copper



white / white /
white



black / white /
brass



black / black /
white



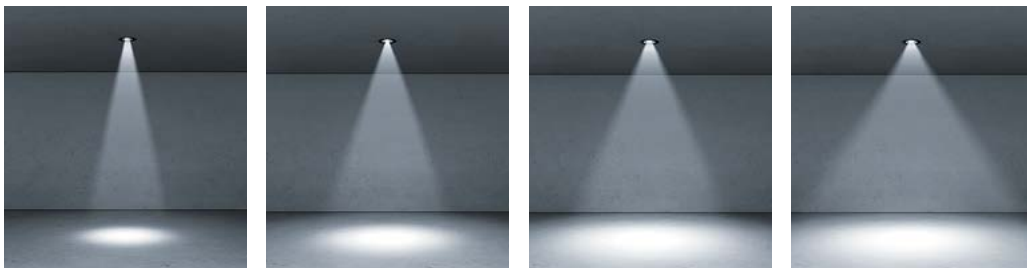
Scale: 1:1

POWERFUL

Modern reflector technology and lumen packages of up to 2500 lm make the powerful MICROS II the ideal choice for general lighting tasks. A number of beam angles combined with excellent glare control and a range of light colours improve the level of visual comfort significantly.

STATE-OF-THE-ART TECHNOLOGY

In addition to an on/off switch, users can also choose between DALI control, BasicDIM Wireless and phase angle control.



Spot
14° (R68)
16° (R100)
16° (R125)

Flood
20° (R68)
24° (R100)

Wide Flood (R68/R100)
30° (R68)
36° (R100)
38° (R125)

Very Wide Flood
38° (R68)
58° (R100)
64° (R125)

Bayonet mounting
for simple and
fast installation

Luminaire housing in
2 sizes and
2 colours

Luminaire head
available in
2 sizes and
3 colours

Reflector with
3 beam angles

Deco reflector available
in 4 colours



INDIVIDUAL

MICROS II is an impressive combination of flexibility and individuality. Individual design requirements can be implemented thanks to a tilting luminaire head, varied colour combinations and three different sizes.

A small luminaire with a big impact.

LUMINAIRE HEAD

Thanks to its gimballed luminaire head that can be tilted by up to 20° and modern reflector technology, MICROS II can meet a number of everyday lighting challenges.

DESIGN OPTIONS

For greater freedom when it comes to project design and customisation, the luminaire heads in white, black and brushed aluminium, as well as the surface mounted housing in white and black, can be combined with deco reflectors in white, black, copper and bronze.

DIFFERENT SIZES

This all-rounder is available in sizes 68 mm, 100 mm and 125 mm each of which offers four different reflector sizes, making it the ideal luminaire for everyday lighting tasks.



ALTERNATIVE TO HALOGEN BULBS

Halogen bulbs are no longer available on the market due to environmental concerns. The recommendation is to replace these with equivalent LED luminaires. Our response to this: MICROS II. This small luminaire with a big impact is the ideal choice for replacing halogen bulbs in ancillary areas.

Environmental protection and using resources responsibly are a key priority for Zumtobel. This is why we use long-lasting, environmentally-friendly LEDs rather than materials with a high environmental risk potential.

INSTALLATION

MICROS II offers simple, flexible installation options thanks to its well thought-out design.

RECESSED LUMINAIRE INSTALLATION



SURFACE MOUNTED LUMINAIRE INSTALLATION





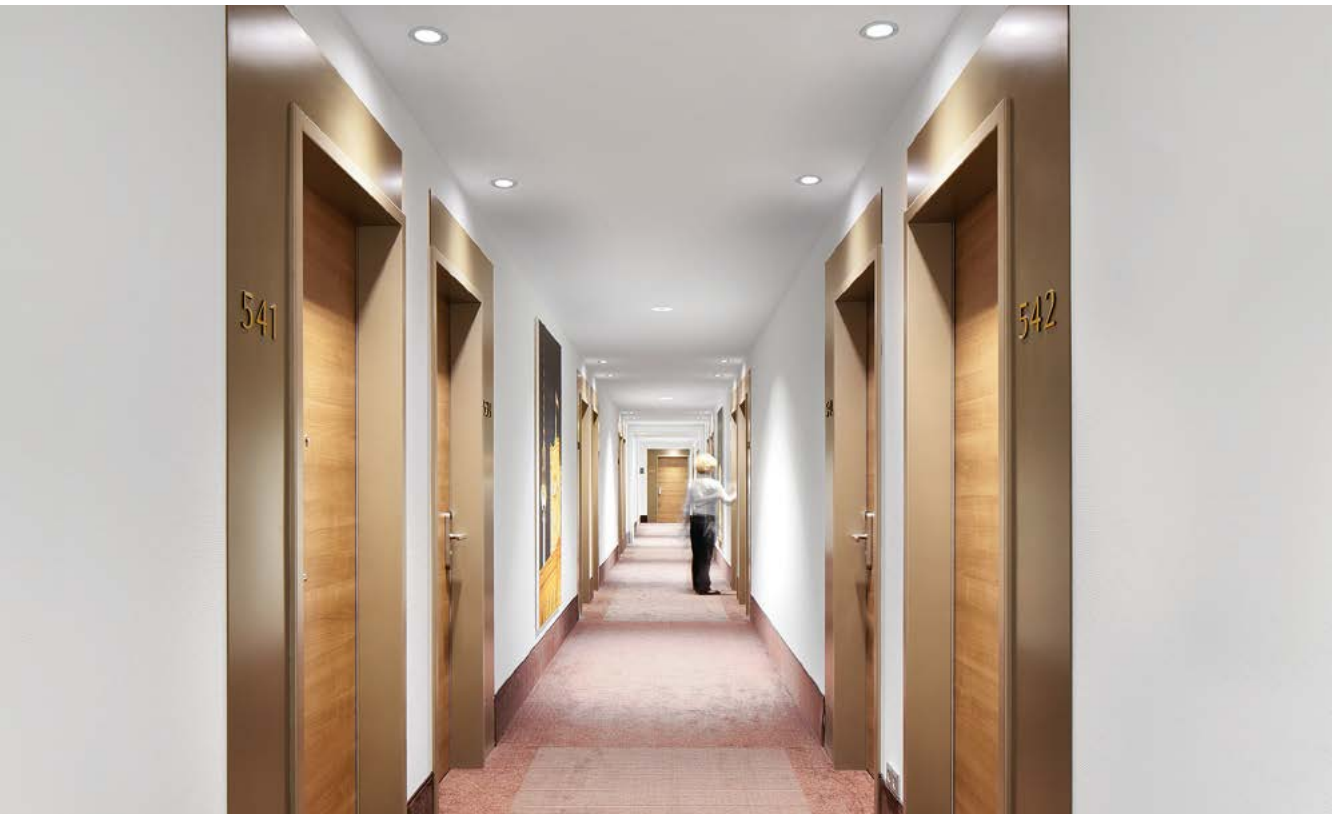
Austrian Standards Institute, Vienna | AT



Diesel Store, Vienna | AT



Interspar Haus am Schottentor, Vienna | AT



Hotel Ramada, Berlin | DE





Fressbox, Graz | AT



MICROS II R125

MICROS II R100

MICROS II R68



	R125	R100	R68
Mounting type	Recessed	Recessed, surface mounted	Recessed, surface mounted
Lumen package	2500 lm	1200 lm/1700 lm	800 lm
Ceiling cut-out	Ø 125 mm	Ø 100 mm	Ø 68 mm
Adjustment	Swivel-mounted	Swivel-mounted	Swivel-mounted
Shape	Circular	Circular	Circular
Efficiency	86 lm/W	86 lm/W	73 lm/W
Light colours	3000 K, 4000 K	2700 K, 3000 K, 4000 K	2700 K, 3000 K, 4000 K
Driver	Switchable, DALI dimmable (LDO), basicDIM,	Recessed: switchable, DALI dimmable (LDO), basicDIM, phase angle control Surface mounted: switchable	Recessed: switchable, DALI dimmable (LDO), basicDIM, phase angle control Surface mounted: switchable
CRI	90	90	90
SDCM	3	3	3
Light distribution	SP/WFL/VFL	SP/FL/WFL/VFL	SP/FL/WFL/VFL
Accessories	-	IP44 cover	IP44 cover

Colours:

Surface mounted housing	-	<input type="checkbox"/> White (WH)	<input type="checkbox"/> Black (BK)	<input type="checkbox"/> White (WH)	<input type="checkbox"/> Black (BK)
Deco reflector	<input type="checkbox"/> White (DWH)	<input type="checkbox"/> Black (DBK)	<input type="checkbox"/> Copper (DCU)	<input type="checkbox"/> Brass (DMS)	
Luminaire	<input type="checkbox"/> White (WH)	<input type="checkbox"/> Black (BK)	<input type="checkbox"/> Aluminium (AL) except R125		

T H E L I G H T



zumtobel.com/contact