

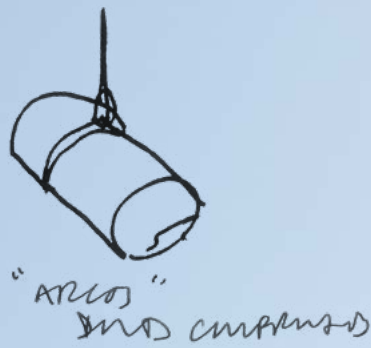


ARCOS III

THE FINE ART OF LIGHT



James Simon Gallery, Berlin | DE
Architecture: David Chipperfield Architects, Berlin | DE



“The new ARCOS has surpassed itself. The newly developed optical system offers even better light quality and unique flexibility. We’ve retained the tried-and-tested minimalist design and the precise structures.”

David Chipperfield
David Chipperfield Architects, London | UK





MASTERLY

Museum visitors can lose themselves in the beauty of the artworks thanks to lighting that promises absolute freedom in presentation and drama. ARCOS III zoomfocus allows us to make this promise.

It is suitable for any architectural or scenographic challenges surrounding exhibitions. A masterpiece of lighting.

LIGHTING FOR ALL:

ARCOS III zoomfocus tunableWhite allows the light to be adapted for any era or style.



Old Masters



Impressionism



Contemporary art



Photography

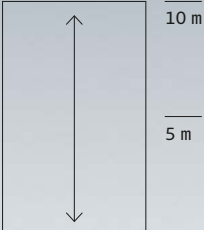


LEE BUL





SIZE L
CEILING HEIGHTS UP TO 10 M

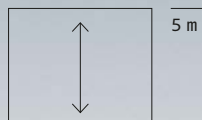


ARCOS III



SIZE M

CEILING HEIGHTS UP TO 5 M





ADAPTABLE

This ultra-precise lighting tool adapts easily to different ceiling heights and spatial configurations. Zooming and focussing is intuitive and functions in the same way as a camera lens. The special lens system enables variable light distribution as well as adjustable beam edges and colour temperatures. No stray light. No multiple shadows. The gaze is drawn to what's important.

ARCOS III zoomfocus has been developed for constantly changing requirements at the highest level.

ZOOM



Spot Medium Spot Flood Wideflood

OVAL ZOOM



FOCUS



Soft Hard

tunableWhite



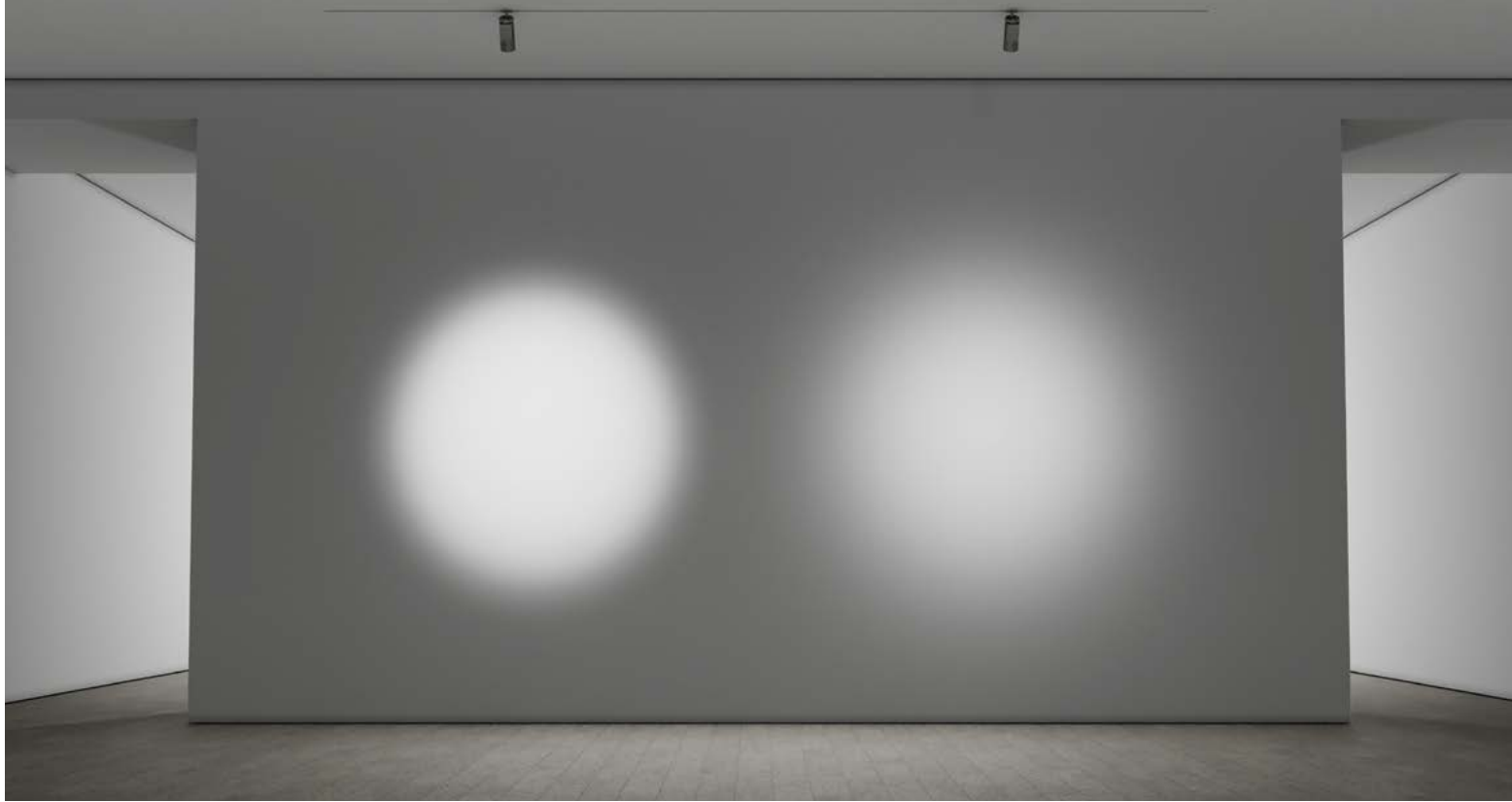
2700K - 6500K



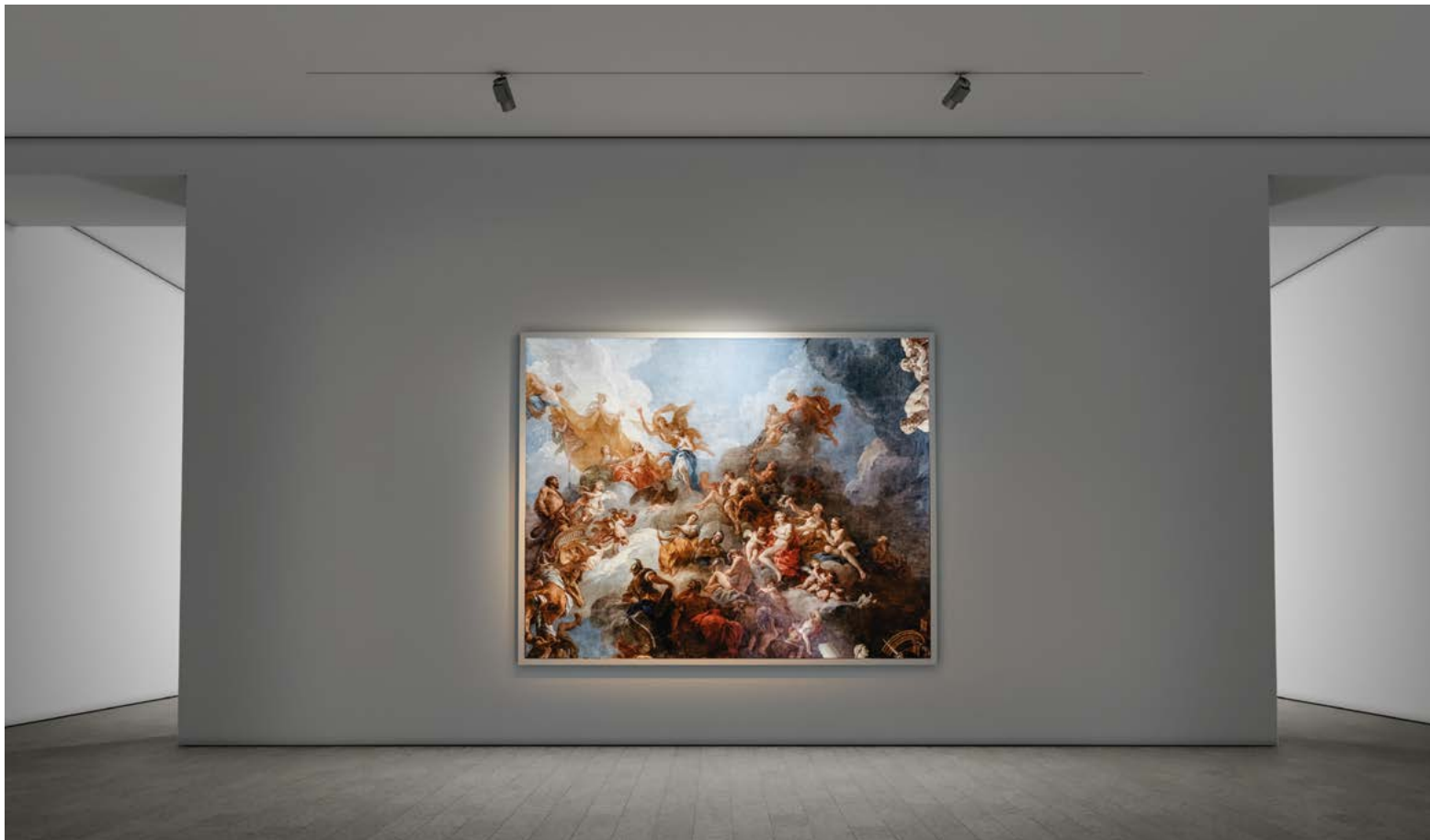
The spotlight can be flexibly adapted to the size of the artwork. Whichever beam angle is selected, absolute precision and excellent uniformity without stray light are guaranteed.



Thanks to the unique, easy-to-adjust zoomfocus lens, the same light distribution can be achieved from different distances and beam edges sharpened or softened as required.



Whether accent lighting for sculptures and selected details - employing maximum contrast (left luminaire) or lighting with a softer beam (right luminaire): the fine adjustment of the beam characteristic using the focus function ensures a better quality of perception.



Variable colour temperatures and adjustable light distribution - all from a single luminaire. In accordance with the Monza Method (see p. 19), a combination of warm-white and cool-white colour temperatures paired with flood and spot distributions opens up a unique level of perception and storytelling. For this painting a mix of warm-white lighting for the whole surface (left luminaire) and cool-white accent lighting on the blue image area (right luminaire) was selected.

Optical system

ARCOS III zoomfocus

1

Oval lens and "Very wideflood" lens optional in the accessory ring

- Rotatable
- Integrated in the front ring of the lens

2

Accessory ring

3

Zoom lens

- Integrated within the zoomfocus cartridge
- Intuitive handling
- Light distribution options from Spot to Wideflood
- Excellent glare control
- Precision mechanics link zoom & focus control

4

Focus lens

- Integrated in the front ring of the lens
- Intuitive handling
- Enables softening or sharpening of beam edges
- Precision mechanics link zoom & focus control

5

Mixing chamber with spherical lens

- Excellent colour mixing and directing of the mixed light into the zoomfocus lens cartridge
- Excellent colour mixing and light beaming of the LED circuit board in the zoomfocus lens

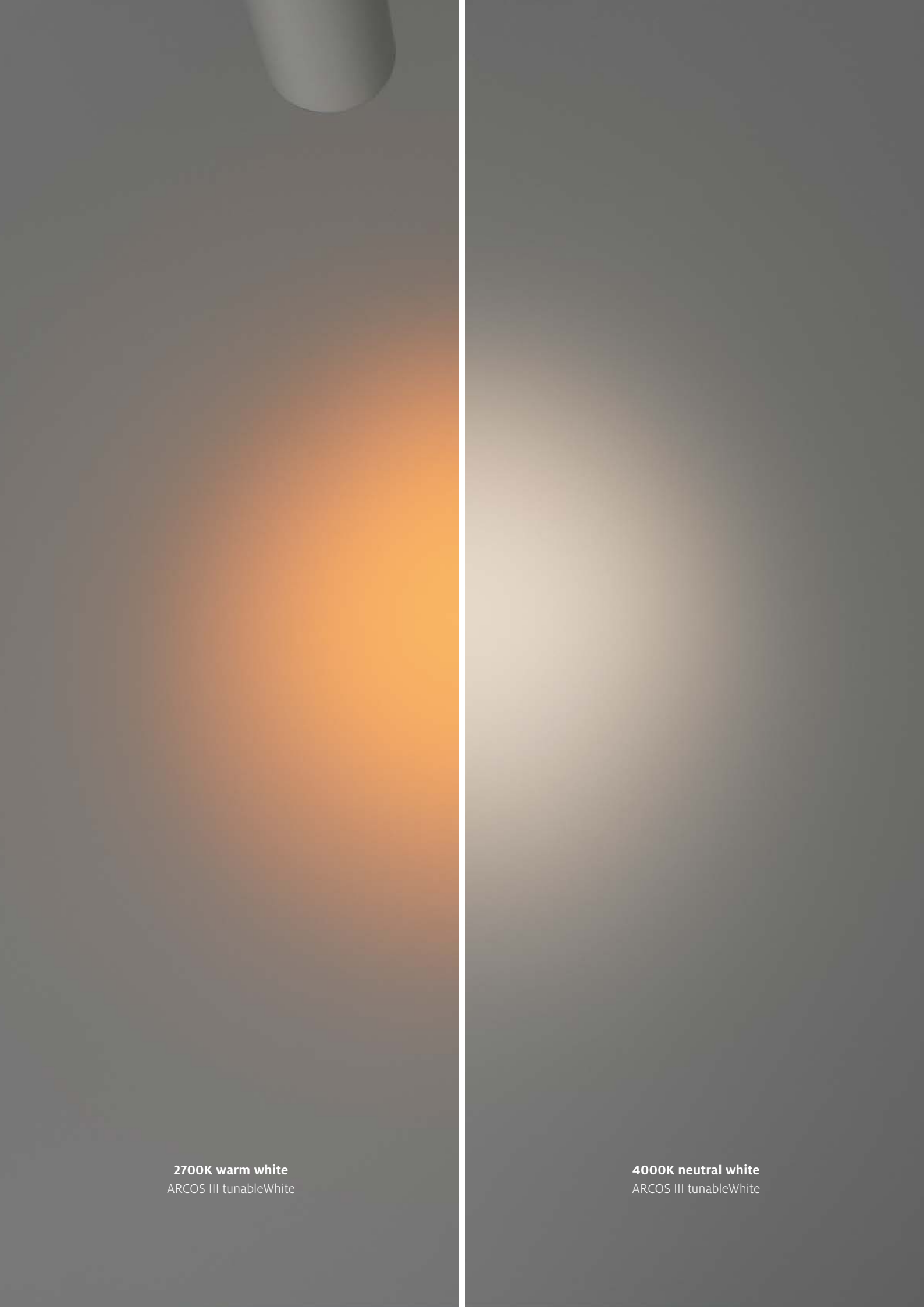
6

LED module

- Maximum luminances in a very compact size
- Excellent colour rendering
Ra > 96 R9 (red) > 94 (stableWhite)
- 3-channel tunableWhite Ra > 90 (SDCM2)
for perfect white light quality







2700K warm white
ARCOS III tunableWhite

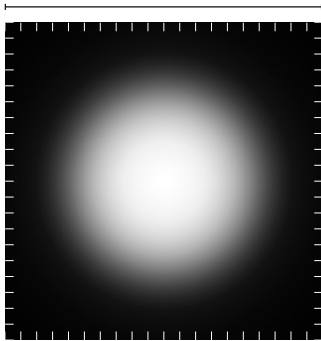
4000K neutral white
ARCOS III tunableWhite

EVEN

The extremely precise light distribution ensures ultra uniformity and strong contrast, enabling artworks to be illuminated with the right amount of light and without disruptive stray light. For excellent quality of perception.

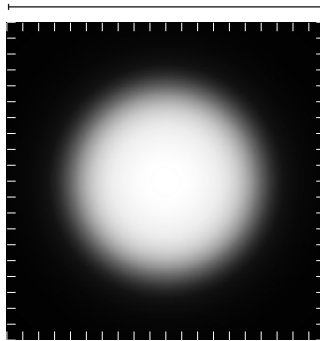
Soft edge

>90% of light reaches the area of 2 x 2 metres



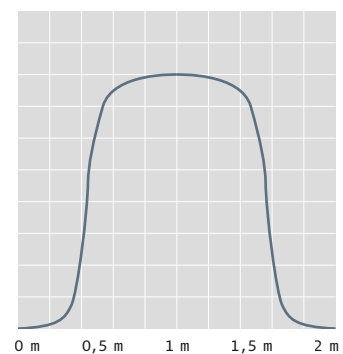
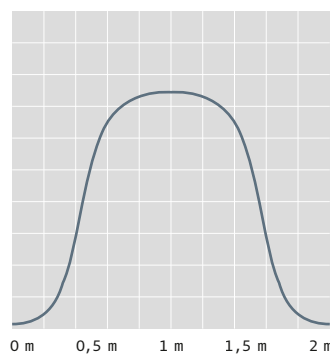
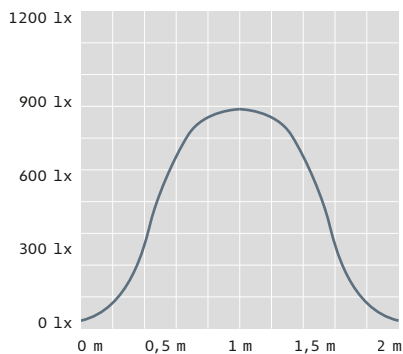
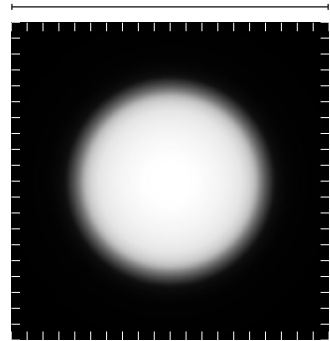
Soft to hard edge

>94% of light reaches the area of 2 x 2 metres



Hard edge

>96% of light reaches the area of 2 x 2 metres



Framework conditions

Distance between luminaire and wall: 4 m

Beam angle: 15°



Conventional lighting with one type of luminaire



Using at least two luminaires in accordance with the Monza Method, contrasts and tonal differences are increased and details better perceived by the observer.

ORIGINALITY

Only the right light makes viewing an artwork a truly impactful experience. That's why we've equipped ARCOS III zoomfocus with our 3-channel tunableWhite technology. Combining the perfect colour spectra with the right light distributions enables structures, colours, fine details and materials to be authentically presented, creating the contrasts and effects required.



TUNABLEWHITE FOR CHANGES OF MOOD

ARCOS tunableWhite technology uses adjustable light colours in combination with variable light distributions to create diverse moods and effects in order to meet a wide variety of requirements for exhibitions, styles and objects. The high colour rendering with an Ra value

> 90 and colour consistency (MacAdam 2) as well as the high colour contrast resulting from the 3-channel colour mixing substantially improves the presentation of the exhibit. ARCOS III zoomfocus gives museums managers a more sensitive and adaptable spotlight.

THE MONZA METHOD

The Monza Method is based on the relationship between colours and the human system of perception. Through the controlled changing and combining of light sources with different spectral distribution curves, particular pigments can be better perceived by the

human eye. A slow, dynamic changing of colour temperature can be used to draw attention to different colours and figures, allowing them to be viewed from other perspectives.



1

Locking screw

- Locks position in both axes
- The spotlight holds its set position perfectly once adjusted

2

Dimming controller

- ON-board dimming
- Bluetooth® and DALI options allow full control of lux values on the objects - to present but also conserve the artwork.

3

Colour temperature controller

- Seamless adjustment of the colour temperature from 2700K to 6500K via control system or directly on the spotlight

4

Driver

- Electronic driver components thermally separated from the LED
- Bluetooth® driver and integrated Beacon enable easy integration into smart digital museum concepts
- DALI
- tunableWhite
- 1-10 V

5

Lens

- Highly intuitive and innovative zoomfocus lens
- Variable light distributions and beam characteristics combined in a single mechanism

S O P H I S T I C A T E D

Precise and intuitively adjustable lighting for the flexible presentation of artworks. The selected spotlight position is secured thanks to the locking function. The thermal separation of electronics and LED guarantees a long life time. Networking via Bluetooth® makes the light easier to adjust and offers brand new possibilities for visitor interaction.

INTERACTIVE AND SUSTAINABLE

Interaction with digital museum guides allows the luminaires to detect when someone is standing in front of the artwork. Details about the origins of the work and the artist can be played on the end device. Art exhibitions become an informative experience.

The targeted lighting and a stronger contrast reduce the amount of light needed and collateral stray light. The smart luminaire opens up new ways of saving energy and reducing the potential for damage. The light can be easily dimmed or the colour temperature adjusted using an app via Bluetooth® basicDim Wireless, DALI or onboard directly on the luminaire.



Albertinum, Dresden | DE
Architecture: Staab Architekten, Berlin | DE



National Museum, Warsaw | PL
Architecture: WWA, Warsaw | PL



Stedelijk Museum, Amsterdam | NL

Architecture: Mels Crowe1, Benthem Crowe1 Architects, Amsterdam | NL



ARCOS 2 LED XPert PROJECTION SPOTLIGHTS

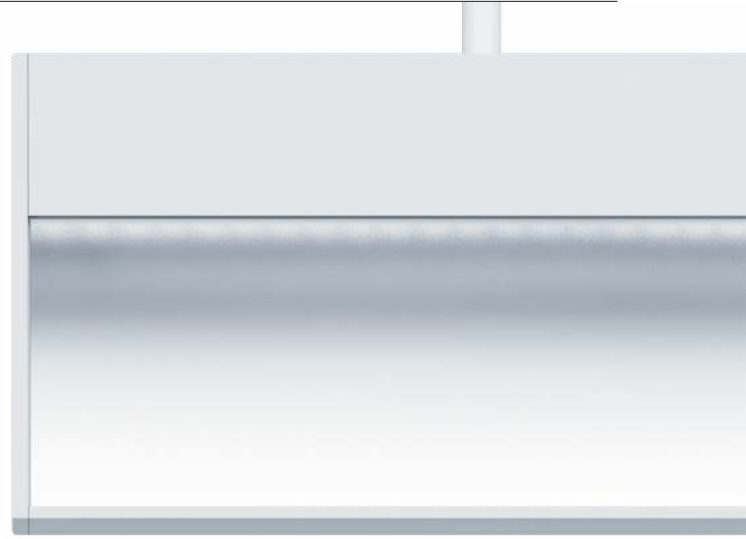
Based on the qualities of the ARCOS size 2 spotlight, the equally compact projection spotlight perfectly stages the exhibits – with sharp contours and uniform light distribution against a subdued background illumination on the wall. The mechanically adjustable lenses are positioned to shape the beam precisely as required – with the highest flexibility.



ARCOS 3 LED XPert PROJECTION SPOTLIGHTS

The ARCOS size 3 projector, lockable in both axes, with its contrast-rich accent lighting and uniform light distribution ensures a wonderful exhibition experience. Exhibits are perfectly showcased while background wall lighting is subdued. The dimming level can be set on the spotlight itself, in order to retain preset illuminances.



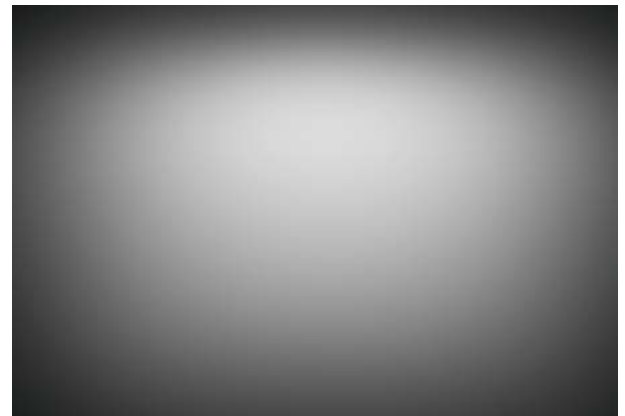


ARCOS 3 XPERT LED LITECARVE®

Thanks to a special lens and the unique free-form reflector, the patented liteCarve® technology in ARCOS size 3 enables indirect, targeted lighting of vertical surfaces. With colour rendering of Ra 98 and the low MacAdam 1 x 2 colour consistency, the innovative LED module Xicato Artist works with the optic to guarantee maximum light quality.

ARCOS LED WALLWASHER

A new lens-reflector combination enables both vertically and horizontally uniform lighting of large surfaces and objects. The smooth uniformity is complemented by the high colour rendering Ra > 90. The minimalist design in two lengths make the wallwasher compatible with ARCOS LED spotlights and allow easy integration into the architecture. The dimming feature – also via DALI – opens up great energy-saving potential and easy adaptation to exhibition requirements.





Meridian Gate (Wumen), Forbidden City, Beijing | CN

SIZE M



SIZE L



Dimensions:	Diameter 100 mm	Diameter 120 mm
Ceiling height:	up to 5 m	5 to 10 m
Beam uniformity / Visual effectiveness:	FWHM 16° - FW10th 19° Spot FWHM 9° - FW10th 14° Superspot	FWHM 12° - FW10th 18° Spot FWHM 7° - FW10th 11° Superspot
Light distribution / Beam angle:	ZOOM FWHM Superspot 9° - Wideflood > 30° FOCUS (beam edge) FW10th 14° - 50°	ZOOM FWHM Superspot 7° - Wideflood > 37° FOCUS (beam edge) FW10th 11° - 76°
Lux on the object / Installation distance:	Spot 16°: 1500 - 200 lx 2 to 4 m distance at < 5 m ceiling height	Spot 12°: 1050 - 330 lx 4 to 10 m distance at 5 - 12 m ceiling height
Accessories:	Oval lenses, Wideflood lens, Fix Beam setting	Oval lenses, Wideflood lens, Superspot cone & Fix Beam setting
Colour temperatures:	2700K - 6500K (tunableWhite), 3000K and 4000K (stableWhite)	
Colour rendering:	CRI Ra > 96, R9 > 94 stableWhite CRI Ra > 90 (3-channel tunableWhite)	
SDCM:	MacAdam 2	
Control / Light management:	DALI, Bluetooth® basicDIM Wireless + beacon integrated, 1 - 10 V ON-board, flicker-free dimming	
Colours:	<input type="checkbox"/> White matt (WHM) <input checked="" type="checkbox"/> Anthracite matt (AZM)	
Adjustment:	Rotatable 360°, pivotable 90°, lockable	

T H E L I G H T

70Z
#70YEARSZUMTOBEL

zumtobel.com/contact