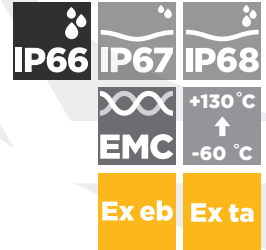
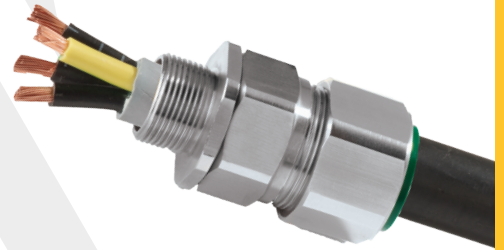


CWe INTERNATIONALLY APPROVED, Ex eb, EXPLOSIVE ATMOSPHERE CABLE GLAND

FOR ALL TYPES OF STEEL & ALUMINIUM WIRE ARMoured CABLES

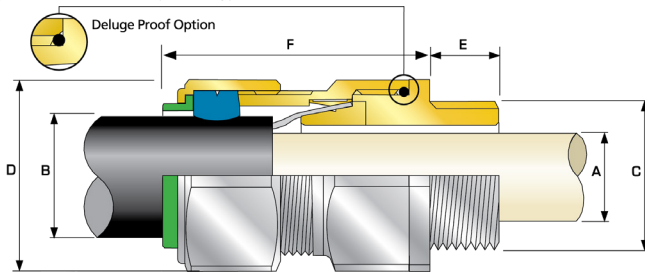
- Metal-to-metal armour clamping
- Direct & remote installation
- Permanently crimped, low impedance earth termination
- Secure against self-loosening
- Controlled outer 'load retention' seal
- Unique OSTG prevents overtightening
- -60°C to +130°C
- Internationally marked, IECEx & ATEX
- Superior EMC performance



TECHNICAL CLASSIFICATION	
DESIGN SPECIFICATION	BS 6121:Part 1:1989, IEC 62444, EN 62444
MECHANICAL CLASSIFICATION*	Impact = Level 8, Cable Anchorage = Class D
ENCLOSURE PROTECTION	IK10 to IEC 62262 (20 joules) Brass & Stainless Steel only
ELECTRICAL CLASSIFICATIONS*	Category B
INGRESS PROTECTION RATING**	IP66 as standard (IP67, IP68*** available upon request)
CABLE GLAND MATERIAL	Brass, Electroless Nickel Plated Brass, Aluminium, Stainless Steel
SEAL MATERIAL	CMP SOLO LSF Halogen Free Thermoset Elastomer
CABLE TYPE	Single Wire Armour (SWA), Aluminium Wire Armour (AWA),
SEALING TECHNIQUE	Outer Load Retention Seal (LRS)
SEALING AREA(S)	Outer Cable Sheath
ARMOUR CLAMPING	Detachable Armour Cone & AnyWay Universal Clamping Ring

* Mechanical & Electrical Classifications applied as per IEC 62444 & EN 62444 ** When CMP installation accessories are used. Refer to www.cmp-products.com for further information. *** IP68 tested to a minimum depth of 30 metres for 12 hours, alternate depths / durations can be provided upon request

Deluge Proof version available, ferrule colour coded white for ease of identification, please add "D" after the product type.



GLOBAL PRODUCT CERTIFICATION			
ATEX CERTIFICATE	CML18ATEX1323X	IECEx CERTIFICATE	IECEx CML 18.0180X
CODE OF PROTECTION	⊕ II 2G 1D, Ex eb IIC Gb, Ex ta IIIC Da	CODE OF PROTECTION	Ex eb IIC Gb, Ex ta IIIC Da
COMPLIANCE STANDARDS	EN 60079-0,7,31	COMPLIANCE STANDARDS	IEC 60079-0,7,31
EAC CERTIFICATE	TC RU C-GB.AA87.B.00487	UKrSEPRO	CL 19.0371X
RETIE APPROVAL NUMBER	03866	CCOE / PESO (INDIA) CERTIFICATE	P444949
NEPSI CERTIFICATE	GYJ18.1435X	INMETRO APPROVAL	TUV 12.0617X
ECAS CERTIFICATE	20-02-05625		
MARINE APPROVALS	LRS: 01/00172 DNV: TAE00000Y ABS: 16-LD1478091-PDA, BV: 43180 A1 BV		



COMBINED ORDERING REFERENCE ("BRASS METRIC")			METRIC	THREAD LENGTH (METRIC) "E"	CABLE BEDDING DIAMETER "A"		OVERALL CABLE DIAMETER "B"			ARMOUR RANGE		ACROSS FLATS "D"	ACROSS CORNERS "D"	PROTRUSION LENGTH "F"	SHROUD	CABLE GLAND WEIGHT (kg)
SIZE	TYPE	ORDERING SUFFIX			MAX	MIN	MAX	MIN	MAX	MIN	MAX	MAX	MAX			
20S16	CWE	1RA	M20	15.0	8.7	6.1	13.1	0.8	1.25	24.0	26.4	48.0	PVC04	0.10		
20S	CWE	1RA	M20	15.0	11.7	9.5	15.9	0.8	1.25	24.0	26.4	48.0	PVC04	0.10		
20	CWE	1RA	M20	15.0	14.0	12.5	20.9	0.8	1.25	30.5	33.6	48.0	PVC06	0.15		
25S	CWE	1RA	M25	15.0	20.0	14.0	22.0	1.25	1.6	37.5	41.3	56.0	PVC09	0.22		
25	CWE	1RA	M25	15.0	20.0	18.2	26.2	1.25	1.6	37.5	41.3	56.0	PVC09	0.22		
32	CWE	1RA	M32	15.0	26.0	23.7	33.9	1.6	2.0	46.0	50.6	54.0	PVC11	0.31		
40	CWE	1RA	M40	15.0	32.2	27.9	40.4	1.6	2.0	55.0	60.5	58.0	PVC15	0.45		
50S	CWE	1RA	M50	15.0	38.2	35.2	46.7	2.0	2.5	60.0	66.0	61.0	PVC18	0.57		
50	CWE	1RA	M50	15.0	44.1	40.4	53.0	2.0	2.5	70.1	77.1	60.0	PVC21	0.75		
63S	CWE	1RA	M63	15.0	50.0	45.6	59.4	2.0	2.5	75.0	82.5	74.0	PVC23	1.04		
63	CWE	1RA	M63	15.0	56.0	54.6	65.8	2.0	2.5	80.0	88.0	71.0	PVC25	1.02		
75S	CWE	1RA	M75	15.0	62.0	59.0	72.0	2.0	2.5	90.0	99.0	86.0	PVC28	1.79		
75	CWE	1RA	M75	15.0	64.2	66.7	78.4	2.5	3.0	100.0	110.0	82.0	PVC30	2.09		
90	CWE	1RA	M90	24.0	78.6	76.2	90.3	3.15	4.0	114.3	125.7	95.0	PVC32	3.04		
100	CWE	1RA	M100	24.0	91.0	86.1	101.4	3.15	4.0	123.0	135.3	95.0	LSF33	3.13		
115	CWE	1RA	M115	24.0	98.0	101.5	110.2	3.15	4.0	133.4	146.7	107.5	LSF34	4.48		
130	CWE	1RA	M130	24.0	115.0	110.2	123.2	3.15	4.0	152.4	167.6	110.0	LSF35	5.76		

*For material options add the following suffix to the Ordering Reference; Brass (no suffix required); Nickel Plated Brass '5'; 316 Grade Stainless Steel '4'; Copper Free Aluminium '1' For NPT options add the following digits to the material suffix; 1/2" = 31; 3/4" = 32; 1" = 33; 1 1/4" = 34; 1 1/2" = 35; 2" = 36; 2 1/2" = 37; 3" = 38; 3 1/2" = 39; 4" = 310 (Brass requires prefix '0')

Examples: 32CWE1RA534 = Nickel Plated Brass 1 1/4" NPT, 50SCWE1RA035 = Brass 1 1/2" NPT, 25CWE1RA432 = Stainless Steel 3/4" NPT, 20CWE1RA5 = Nickel Plated Brass M20

Dimensions are displayed in millimetres unless otherwise stated

Dimensions listed are for metric cable glands only. Dimensions for alternative threads may vary, please see supplementary technical data sheet.