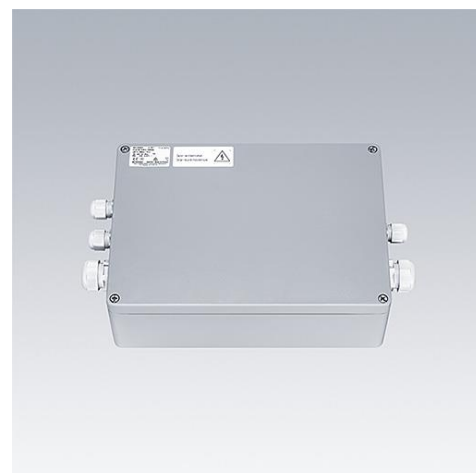


## GTLED Pro gears aluminium

### Light that lasts - for any tunnel

- Designed for long lasting performance suitable with the highest corrosion classification (C5) and no debris retention design
- Light in weight, easy to handle, flexible in fixation - the gear box can be installed up to 200m away from the luminaire to offer safe installation and maintenance
- One single gear box can feed up to 20 luminaires for optimization of the material installed and reduction of the structure constraints
- Dimming on the control gear possible via DALI or Pilot Line
- Pre-wired with connector for a fast error free plug to the luminaire



Photographs, line drawings and photometric data are representative only. For specific product detail please select an individual product.

### Material/Finish

Body: die cast aluminium ENAC 44200

Brackets: steel 316L

Finish: powder painted texturised light grey

### Installation/Mounting

Fixation onto the structure (e.g. ladder) via 2 brackets (supplied) by the means of screws (not supplied)

Power in cabling via one dedicated cable gland - power out (through wiring) via another dedicated cable gland

DALI in cabling via one dedicated cable gland - DALI out via another dedicated cable gland

Ready to plug to the luminaire with the pre-wired and fitted corresponding connector

### Ordering Guide

Description	ILCOS Code	Socket	Wt (kg)	SAP Code
<b>GTLED Pro, gear box, aluminium</b>				
GP AB 1X200 DA LV-OUT1 105 W1,5 CL1			6,894	96670348
GP AB 1X200 DA LV-OUT1 50 W1,5 CL1			6,894	96670349
GP AB 1X200 DA LV-OUT1 70 W1,5 CL1			6,894	96670350
GP AB 2X135 DA LV-OUT1 105 W1,5 CL1			7,742	96670351
GP AB 2X135 DA HV-OUT1 50 W1,5 CL1			7,742	96670352
GP AB 2X135 DA HV-OUT1 70 W1,5 CL1			7,742	96670353
GP AB 2X200 DA HV-OUT1 50 W1,5 CL1			8,192	96670354
GP AB 2X200 DA HV-OUT1 70 W1,5 CL1			8,192	96670355
GP AB 2X200 DA LV-OUT2 105 W1,5 CL1			8,388	96670356
GP AB 3X200 DA HV-OUT1 85 W1,5 CL1			9,582	96670357
GP AB 4X135 DA HV-OUT2 70 W1,5 CL1			10,097	96670358
GP AB 1X200 DA LV-OUT1 100 W1,5 CL1			6,894	96670359
GP AB 1X200 DA LV-OUT1 85 W1,5 CL1			6,894	96670360
GP AB 2X135 DA LV-OUT2 100 W1,5 CL1			7,938	96670361
GP AB 2X200 DA LV-OUT2 100 W1,5 CL1			8,388	96670362
GP AB 2X200 DA LV-OUT1 85 W1,5 CL1			8,192	96670363
GP AB 3X200 DA HV-OUT1 70 W1,5 CL1			9,582	96670364
GP AB 4x135 DA LV-OUT2 105 W1,5 CL1			10,097	96670365
GP AB 4x135 DA HV-OUT2 50 W1,5 CL1			10,097	96670366
GP AB 4x200 DA HV-OUT2 70 W1,5 CL1			10,997	96670367