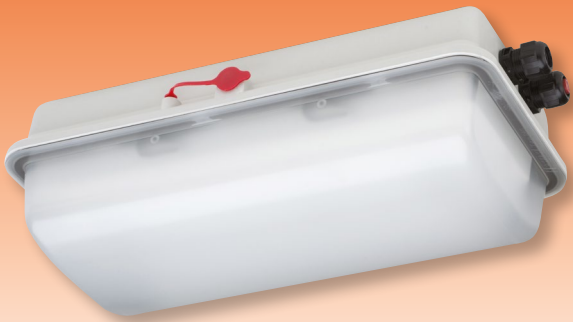


Small LED-Light Fittings for Ex-Zone 1/21 Series e855...



Applications:

Hazardous areas in Zones 1/2 (gas) and 21/22 (dust) as standard illumination for small rooms and above doors, i.e. as information or escape route lighting with pictograms.

Design:

Housing: Glass fibre reinforced polyester resin.

Diffuser: Clear polycarbonate, frosted, detachable, silicone gasket.

Reflector: white, detachable, carrying

the encapsulated LED-modules and protection cover.

Central locking system: Operated by a hexagonal box spanner 13mm.

Connection: Prepared for looping the mains cable. Terminal L1+N+PE; up to 2,5mm².

Cable entries: 2 entries M25 x 1.5 at one of the front side (2 cable glands, 1 with blanking plug).

Mounting: Side fixing brackets allow direct mounting on to walls or ceilings.

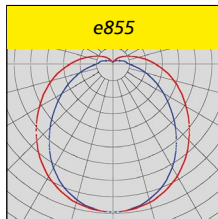
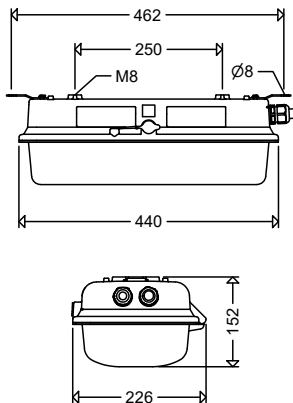
Technical Data:

LED: Line modules appr. 6,500K, CRI > 80, service life L₈₀ > 100.000h, L₉₀ > 95.000h at 25°C ambient temperature, service life L₈₀ > 100.000h at max. ambient temperature

ECG: 220-240V AC/DC, 0 or 50/60Hz, overvoltage, overload and short circuit protection

Note:

This light fitting is not suitable for application in areas with permanent high humidity in combination with only short periods of operation, such as sewage or stormwater retention tanks or water treatment plants.



Options:

- for connection to group or central battery (light fittings of version ZB only) or emergency mains respectively
- with monitoring module for monitoring the individual light fitting

- Control gear with dimming function via DALI2-compatible interface, suitable for the LIMAS Line Light Management System (DIMD)
- preparation for a 5-core looping

Product highlights:

- extremely robust construction of housing and diffuser
- comfortable central locking mechanism for easy maintenance
- innovative encapsulation with high transmission rate
- LED protecting cover against ESD and mechanical damage
- homogeneous illumination due to frosted covers on the reflector for glare limitation, no individual light points visible, comfortable perception of light, brilliant glare limitation
- high colour rendering index CRI > 80, according to the workplace guide lines suitable for nearly all plant locations
- ECG and reflector with LED-modules **replacable by qualified personnel on-site**



Article no.	Type	Connected load [W]	Luminous flux [lm]	Luminous efficacy [lm/W]	Suitable for pictogram	Ta max [°C]	Substitute for *	Weight [kg] (without packing material)

e855...



II 2 G Ex eb mb
op is q II C T4 Gb

II 2 G Ex db eb mb
op is q II C T4 Gb

II 2 D Ex op is tb
IIIC T80°C Db

IP66



EC-Type Examination Certificate:

IBExU 17 ATEX 1132

Other approvals:

IECEX IBE 17.0037

Type of protection: eb (increased safety)

Marking:

II 2 G Ex eb mb op is q II C T4 Gb (Zone 1)

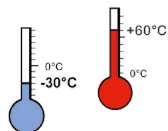
II 2 D Ex op is tb IIIC T80°C Db (Zone 21)

Rated Voltage: 220-240V AC, 176-275V

DC, 50/60Hz

Permissible ambient temperature:

-30°C up to see article table



85500 0007	e855F L05	5	510	102	•	60	1 x 8W	5,0
85500 0001	e855F L10	10	1.060	106		60	2 x 8W	5,0
85500 0002	e855F L20	18	2.050	114		60	2 x 18W	5,1
85500 0003	e855F L10 DIMD	10	1.060	106		60	2 x 8W	5,0
85500 0004	e855F L20 DIMD	18	2.050	114		60	2 x 18W	5,1

* The given information is for rough orientation only. In each individual case a lighting calculation is necessary.

Properties, limitations and details for controlling LED-light fittings:

See "Technical Supplement"

All data are correct at the time of printing. Actual technical data can be found under www.schuch.de.



Accessories / Spare Parts



Self-adhesive pictograms for identification of escape routes acc. to DIN EN ISO 7010 and ASR A1.3.



121/33 W .../34 W .../35 W

Viewing distance = 30m

Article No.	Type	
Spare diffuser		
85501 9001	855	PC frosted
Cable entries/Glands/Breather		
90117 9000	2537	ex-protected plastic cable gland M25 x 1,5
90118 9000	2538	ex-protected plastic plug M25 x 1,5
90259 9000	KS25 EX	ex-breather M25 x 1,5
Mounting material		
90000 0002	15A P	2 ceiling brackets, hot galvanized steel
90032 0002	15AV P	2 ceiling brackets, stainless steel
90037 0004	RO84 112 A P	2 pipe clamps 1 1/2", stainless steel, with support
90038 0004	RO84 2 A P	2 pipe clamps 2", stainless steel, with support
26000 0008	W 26/L P	2 wall mounting brackets
26000 0002	W 26/30 P	2 wall mounting brackets 30°
26000 0003	W 26/45 P	2 wall mounting brackets 45°
Self-adhesive pictograms		
12112 0006	121/33 W	emergency exit to the left
12112 0007	121/34 W	emergency exit to the right
12112 0008	121/35 W	emergency exit below